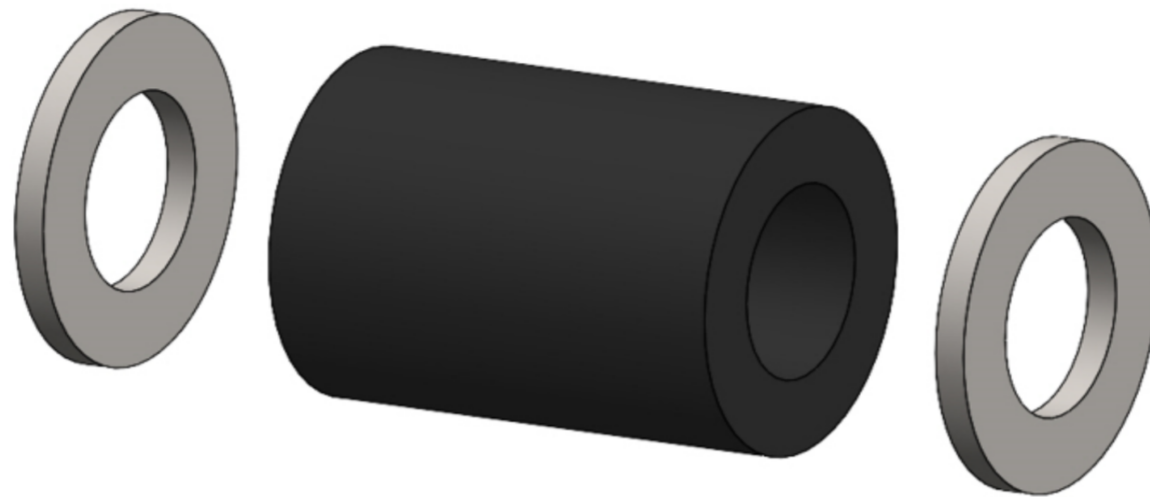


# MIL-S-24235/2 SIZES 1 - 3

## PACKING ASSEMBLIES FOR M24235/1 PRESSUREPROOF BULKHEAD TUBES

GROMMETS - NEOPRENE OR SILICONE  
GLAND RINGS - ZINC PLATED STEEL  
BEVEL WASHERS - NYLON



	SYMBOL #	PACKING ASSEMBLY PART #	GROMMET INSIDE DIAMETER	PENN EL PART # (NEOPRENE GROMMET)	PENN EL PART # (SILICONE GROMMET)
TUBE SIZE 1	2405.1	M24235/2-*001	.312	PA-NE-001	PA-SI-001
	2405.2	M24235/2-*002	.404	PA-NE-002	PA-SI-002
	2405.3	M24235/2-*003	.455	PA-NE-003	PA-SI-003
	2405.4	M24235/2-*004	.490	PA-NE-004	PA-SI-004
	2405.5	M24235/2-*005	.530	PA-NE-005	PA-SI-005
	2405.6	M24235/2-*006	.558	PA-NE-006	PA-SI-006
	2405.7	M24235/2-*007	.590	PA-NE-007	PA-SI-007
TUBE SIZE 2	2406.1	M24235/2-*008	.636	PA-NE-008	PA-SI-008
	2406.2	M24235/2-*009	.680	PA-NE-009	PA-SI-009
	2406.3	M24235/2-*010	.730	PA-NE-010	PA-SI-010
	2406.5	M24235/2-*011	.730	PA-NE-011	PA-SI-011
	2406.4	M24235/2-*012	.800	PA-NE-012	PA-SI-012
TUBE SIZE 3	2407.1	M24235/2-*013	.836	PA-NE-013	PA-SI-013
	2407.2	M24235/2-*014	.900	PA-NE-014	PA-SI-014
	2407.5	M24235/2-*015	.900	PA-NE-015	PA-SI-015
	2407.3	M24235/2-*016	.950	PA-NE-016	PA-SI-016
	2407.6	M24235/2-*017	.950	PA-NE-017	PA-SI-017
	2407.7	M24235/2-*018	1.000	PA-NE-018	PA-SI-018
	2407.4	M24235/2-*019	1.050	PA-NE-019	PA-SI-019

### PENN EL SERVICE COMPANY

801 STONY BATTERY ROAD  
LANDISVILLE, PA 17538  
717-898-2202  
pennel@bearonmfg.com  
pennel.com

