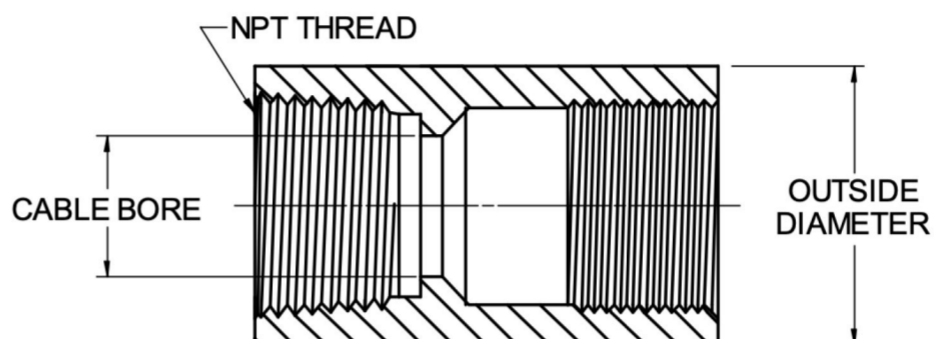
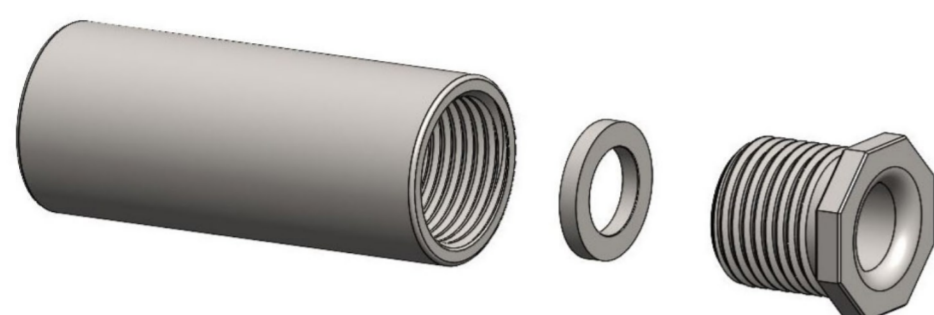


MIL-S-24235/9

STUFFING TUBES, METAL, AND PACKING ASSEMBLIES FOR ELECTRIC CABLES,
BRASS AND STEEL, FOR DECKS AND BULKHEADS WITH PIPE PROTECTION

STAINLESS STEEL
STAINLESS TUBE, GLAND NUT AND GLAND RING



PREFORMED PACKING
MIL-P-16685
(SOLD SEPARATELY)



SIZE	CABLE BORE	OUTSIDE DIAMETER	NPT THREAD	M24235 ASSEMBLY #	PENN EL PART #	PREFORMED PACKING #
A	0.406	1-1/8	3/8	M24235/9-121 MOD	A48-SS-A	MP-BA-A1
B	0.515	1-1/14	1/2	M24235/9-122 MOD	A48-SS-B	MP-BA-B1
C	0.640	1-3/8	3/4	M24235/9-123 MOD	A48-SS-C	MP-BA-C1
D	0.750	1-1/2	3/4	M24235/9-124 MOD	A48-SS-D	MP-BA-D1
E	0.812	1-5/8	1	M24235/9-125 MOD	A48-SS-E	MP-BA-E1
F	0.843	1-5/8	1	M24235/9-126 MOD	A48-SS-F	MP-BA-E1
G	0.953	1-13/16	1	M24235/9-127 MOD	A48-SS-G	MP-BA-F1
J	1.062	2	1-1/4	M24235/9-128 MOD	A48-SS-J	MP-BA-G1
K	1.171	2-1/16	1-1/4	M24235/9-129 MOD	A48-SS-K	MP-BA-J1
L	1.265	2-1/8	1-1/4	M24235/9-130 MOD	A48-SS-L	MP-BA-K1
M	1.406	2-5/16	1-1/2	M24235/9-131 MOD	A48-SS-M	MP-BA-L1
N	1.515	2-7/16	1-1/2	M24235/9-132 MOD	A48-SS-N	MP-BA-M1
P	1.625	2-3/4	2	M24235/9-133 MOD	A48-SS-P	MP-BA-N1
R	1.750	2-3/4	2	M24235/9-134 MOD	A48-SS-R	MP-BA-P1
S	1.875	3-1/16	2	M24235/9-135 MOD	A48-SS-S	MP-BA-R1
T	2.062	3-1/4	2-1/2	M24235/9-136 MOD	A48-SS-T	MP-BA-S1
V	2.187	3-3/8	2-1/2	M24235/9-137 MOD	A48-SS-V	MP-BA-T1
W	2.312	3-1/2	2-1/2	M24235/9-138 MOD	A48-SS-W	MP-BA-V1
X	2.500	3-7/8	3	M24235/9-139 MOD	A48-SS-X	MP-BA-W1
Y	2.609	3-7/8	3	M24235/9-140 MOD	A48-SS-Y	MP-BA-X1
Z	2.781	3-15/16	3	M24235/9-141 MOD	A48-SS-Z	MP-BA-Y1
AA	2.875	4-1/8	3	M24235/9-142 MOD	A48-SS-AA	MP-BA-Z1
BB	3.157	4-1/2	3-1/2	M24235/9-143 MOD	A48-SS-BB	MP-BA-Z1

PENN EL SERVICE COMPANY

801 STONY BATTERY ROAD
LANDISVILLE, PA 17538
717-898-2202
pennel@bearonmfg.com
pennel.com

